



Quick Start Guide

Interactive FT

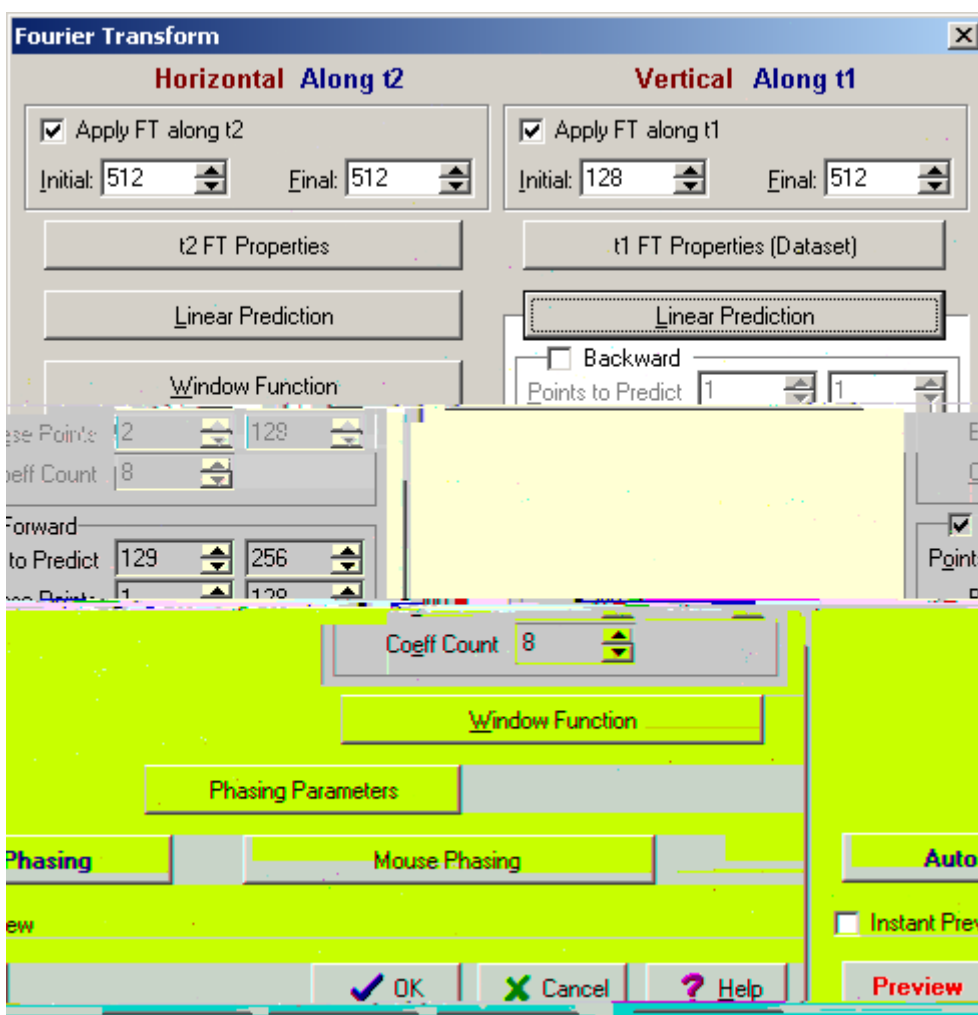
ACD/NMR Processor v12.01

Joe DiMartino
Advanced Chemistry Development, Inc.
Toronto, ON, Canada

Introduction

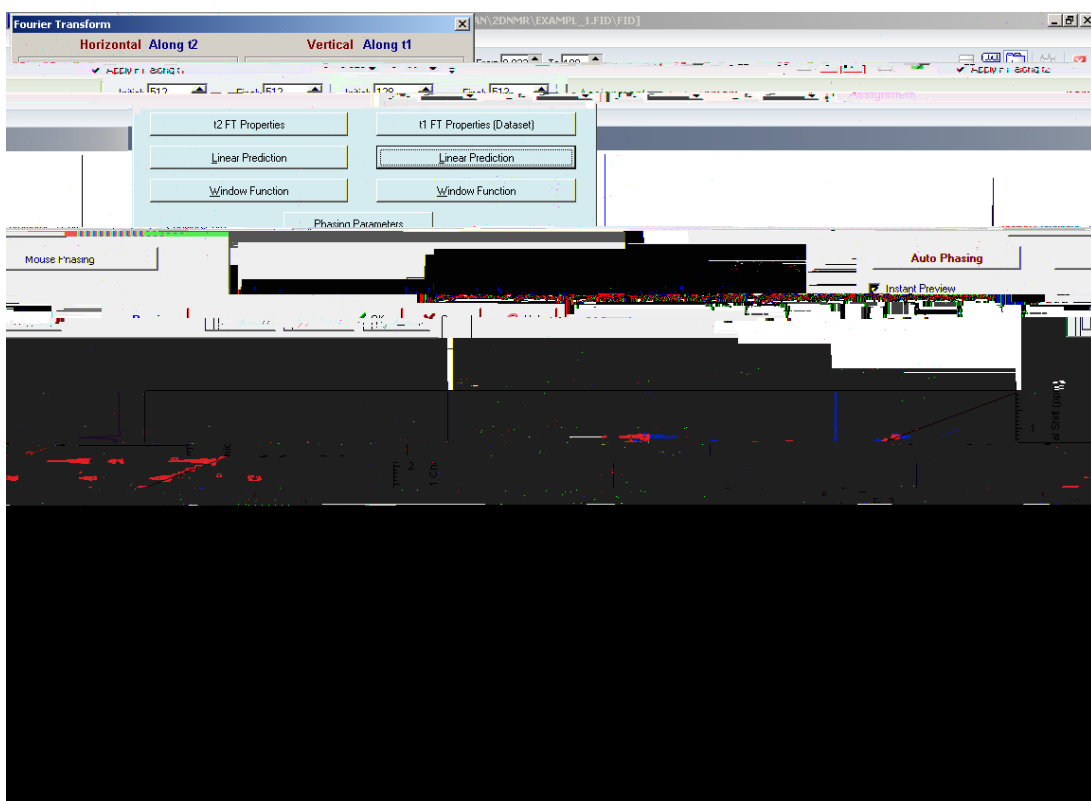
The instructions below describe how to pre-process your data. For more information on the

By selecting any of the headers (i.e. Linear Prediction, Window Function), this dialog box will expand out:

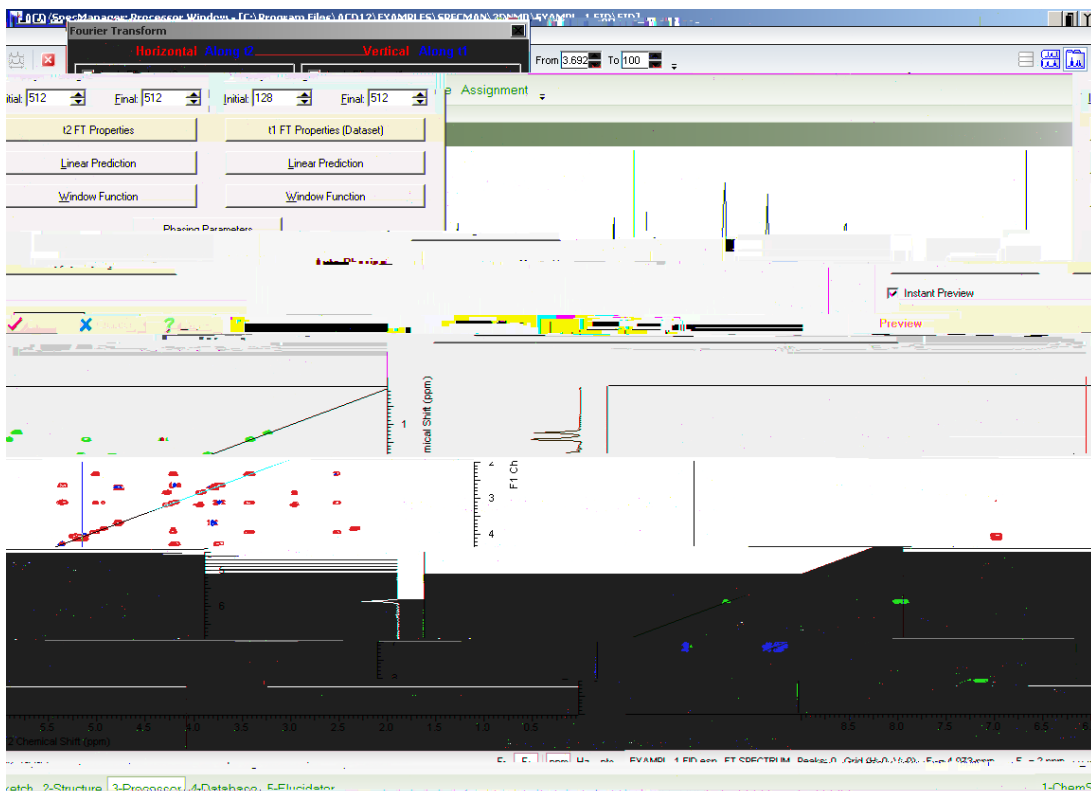


If you would like to see an instant preview of the 2D NMR data, select **Instant Preview** and it will contain all the changes you made.

Note If you are not satisfied with how the contours appear, you can still do further processing with the [Interactive FT](#) dialog box.

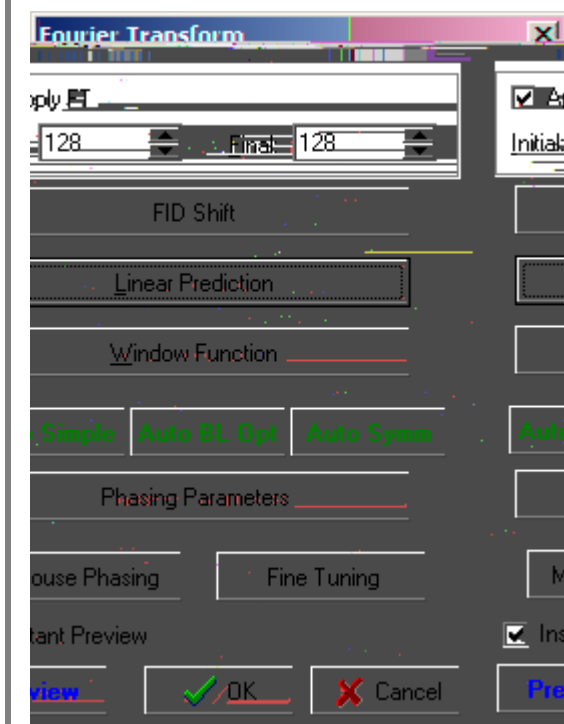


In this case, select **Auto Phase** in the **Interactive FT** dialog box and it will automatically update the 2D NMR spectrum:



Click **OK** once you are pleased with the processing.

Note **Interactive FT** is also in the ACD/1D NMR Processor software and follows the same workflow as what was mentioned above.



Conclusion

The process described above is a basic overview of how to use Interactive FT for pre-processing 2D NMR data with ACD/2D NMR Processor. Many more processing options exist that were not described above. For a more in-depth view of any of the individual processing features, please consult the software manual. Please also visit www.acdlabs.com for more details.